

170

El Camino Real
Tustin, CA

NAI Capital
COMMERCIAL REAL ESTATE SERVICES, WORLDWIDE

OFFICE SPACE
FOR LEASE 420 SF





Property Description

Suite 203, a 420 SF Executive Office space, is now available for lease. This beautifully designed 7,532 SF Mixed Use property is situated in the heart of Old Town Tustin. It has been extremely well maintained and offers a clean, fresh interior. It features a highly functional and leading-edge floor plan. This space shares a lobby/waiting area and restrooms on the second floor. Work among the charming Old Town Tustin historic buildings in a recently constructed building (2011-2012).

170

El Camino Real
Tustin, CA

For more information:

John Manion

Executive Vice President
jmanion@naicapital.com
949. 207. 6424
Cal DRE License #01247695



Private
Windowed
Offices



Convenient Access to the
5, 55, 22 and 241 Freeway/
Toll Road



Second
Floor
Suite



Several Amenities Within
Walking Distance

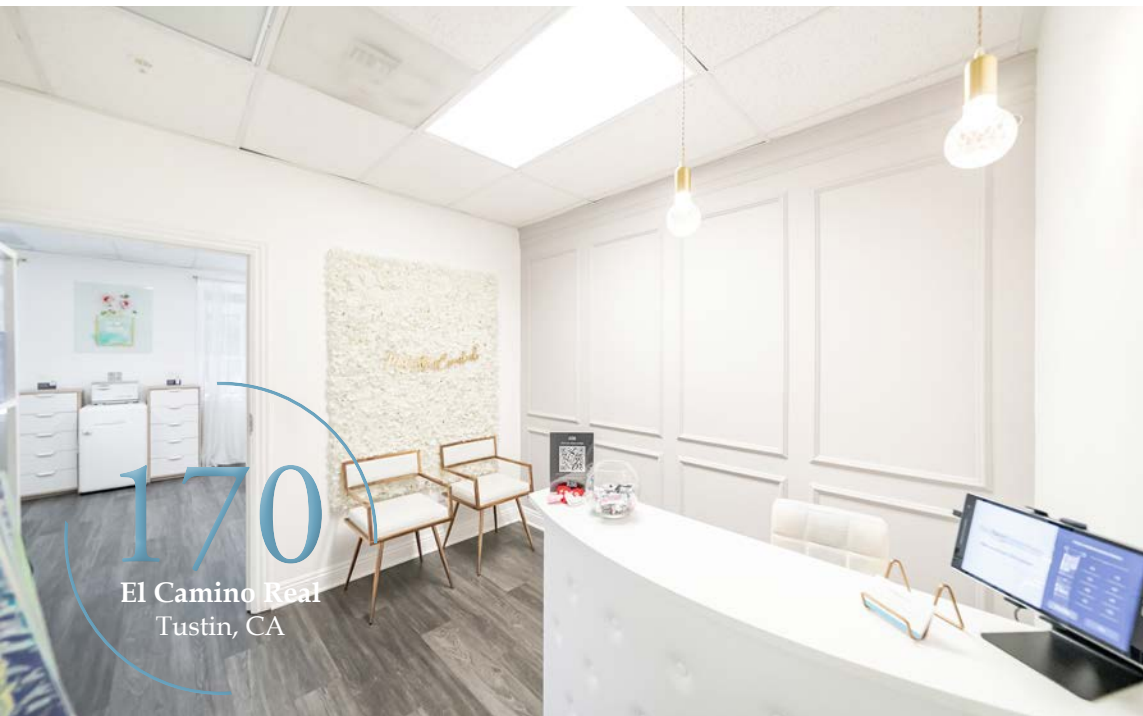


Year Built
2012

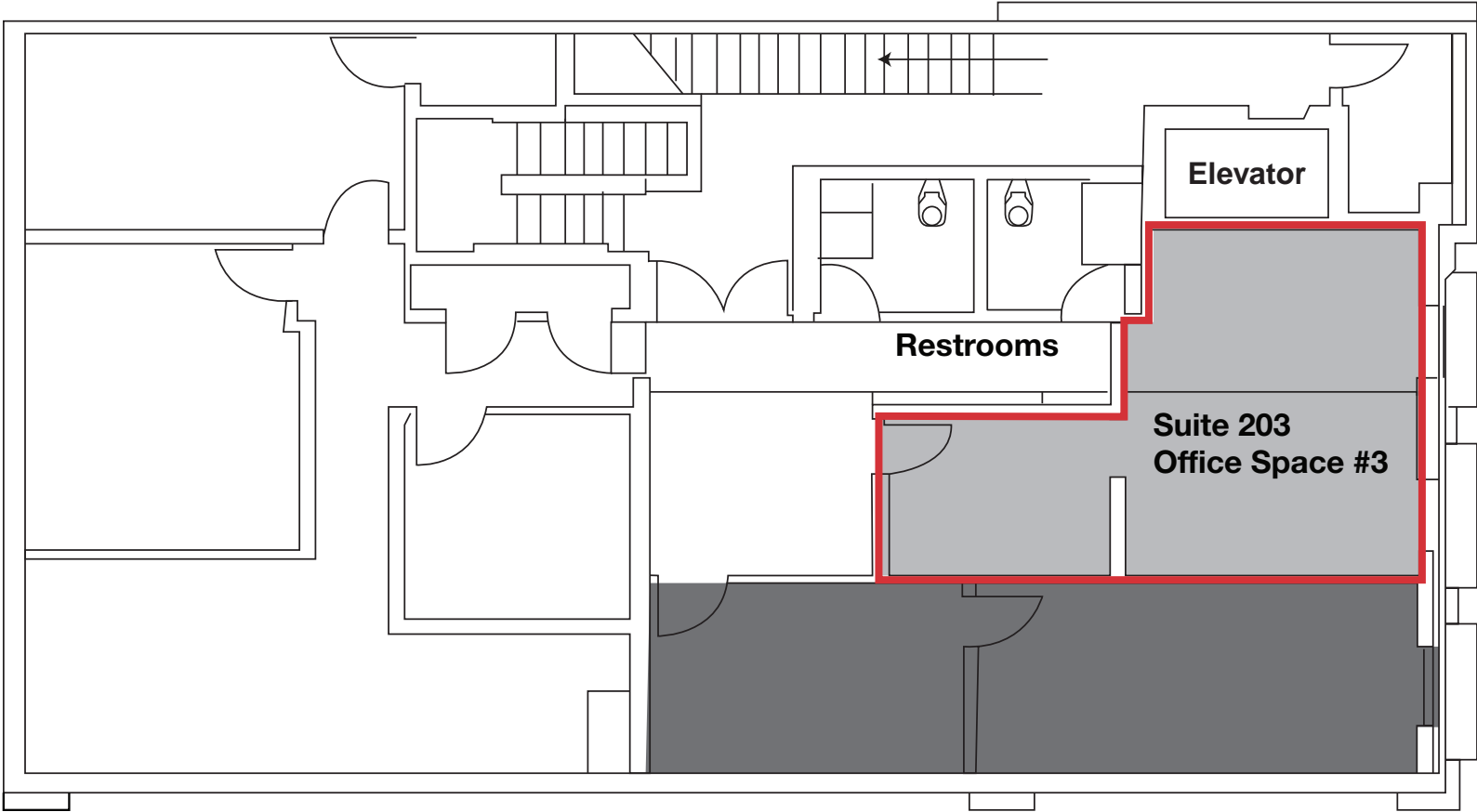


Elevator
Served

Property Photos



170
El Camino Real
Tustin, CA



Second Floor - Floor Plan

Aerial Map



For more information:
John Manion
Executive Vice President
jmanion@naicapital.com | 949. 207. 6424
Cal DRE License #01247695

170

El Camino Real
Tustin, CA

**OFFICE SPACE
FOR LEASE 420 SF**

**For more information,
please contact:**

John Manion

Executive Vice President

jmanion@naicapital.com | 949. 207. 6424

Cal DRE License #01247695